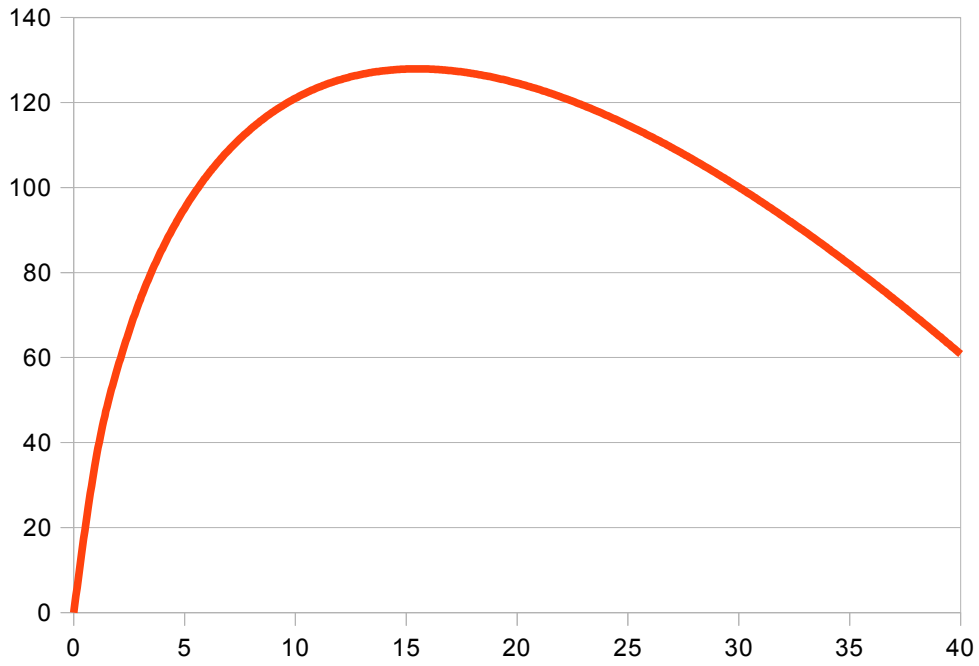


Profit Maximization

L	w=\$12	p*MPL=\$2*24/sqrt(L)	profit=TR-TC	TR	TC=w*L
0	12.00	—	0.00	0.00	0.00
1	12.00	48.00	36.00	48.00	12.00
2	12.00	33.94	57.94	81.94	24.00
3	12.00	27.71	73.65	109.65	36.00
4	12.00	24.00	85.65	133.65	48.00
5	12.00	21.47	95.12	155.12	60.00
6	12.00	19.60	102.72	174.72	72.00
7	12.00	18.14	108.86	192.86	84.00
8	12.00	16.97	113.83	209.83	96.00
9	12.00	16.00	117.83	225.83	108.00
10	12.00	15.18	121.01	241.01	120.00
11	12.00	14.47	123.48	255.48	132.00
12	12.00	13.86	125.34	269.34	144.00
13	12.00	13.31	126.65	282.65	156.00
14	12.00	12.83	127.48	295.48	168.00
15	12.00	12.39	127.87	307.87	180.00
16	12.00	12.00	127.87	319.87	192.00
17	12.00	11.64	127.51	331.51	204.00
18	12.00	11.31	126.83	342.83	216.00
19	12.00	11.01	125.84	353.84	228.00
20	12.00	10.73	124.57	364.57	240.00
21	12.00	10.47	123.05	375.05	252.00
22	12.00	10.23	121.28	385.28	264.00
23	12.00	10.01	119.29	395.29	276.00
24	12.00	9.80	117.09	405.09	288.00
25	12.00	9.60	114.69	414.69	300.00
26	12.00	9.41	112.10	424.10	312.00
27	12.00	9.24	109.34	433.34	324.00
28	12.00	9.07	106.41	442.41	336.00
29	12.00	8.91	103.32	451.32	348.00
30	12.00	8.76	100.09	460.09	360.00
31	12.00	8.62	96.71	468.71	372.00
32	12.00	8.49	93.19	477.19	384.00
33	12.00	8.36	89.55	485.55	396.00
34	12.00	8.23	85.78	493.78	408.00
35	12.00	8.11	81.89	501.89	420.00
36	12.00	8.00	77.89	509.89	432.00
37	12.00	7.89	73.78	517.78	444.00
38	12.00	7.79	69.57	525.57	456.00
39	12.00	7.69	65.26	533.26	468.00
40	12.00	7.59	60.85	540.85	480.00
41	12.00	7.50	56.34	548.34	492.00

Profit Maximization

Profit



Wage and Marginal Revenue Product of Labor

